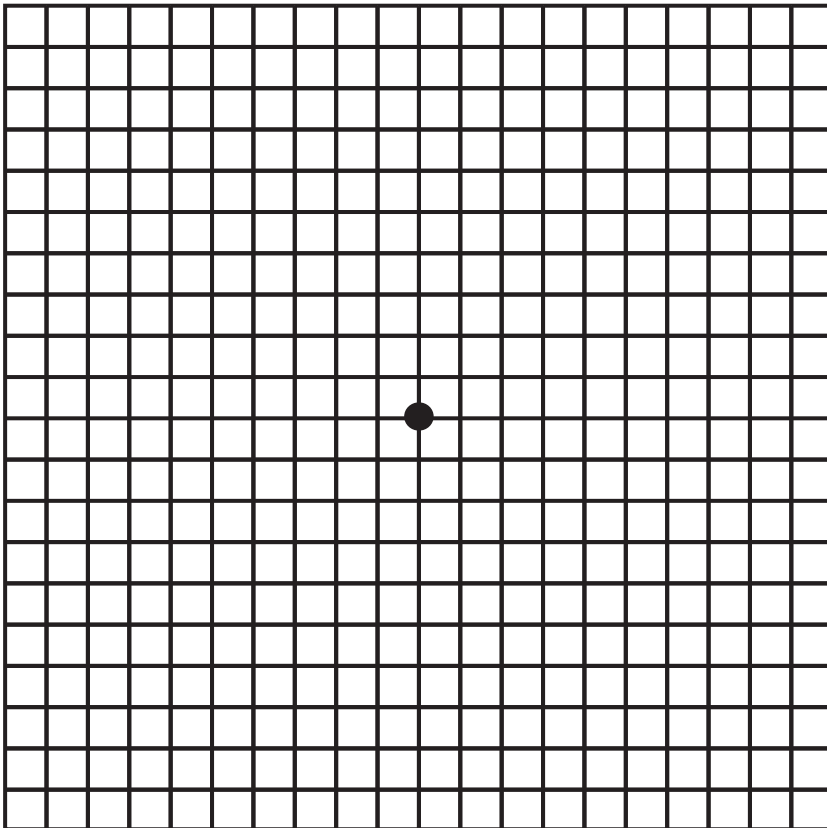


# AMSLER GRID

## Instructions:

1. Wear your reading glasses.
2. Use good light.
3. Observe the grid one eye at a time. Cover the other eye.
4. Look at the central dot while observing, at the same time, the entire chart and details of the grid.
5. Report any changes or abnormalities to your eye doctor.
6. If you have dry eye please use an artificial tear before using the grid.

## Your Testing Grid



Abnormalities include any wavy lines, distortions or missing areas of the grid.



**Clemson Eye**